



JOYA™ TOUCH A6 FOR HEALTHCARE

The new Joya Touch A6 Healthcare (HC) device will optimize your ROI and is designed for use in bedside care, admittance, nursing activities, pharmacy, data collection and sharing, etc.

MULTIPLE DEVICES IN ONE

The Joya Touch A6 device comes with a powerful Qualcomm Snapdragon platform and features Android™ 6.0 Marshmallow (field upgradeable to Android™ 7.1 Nougat). This device is available in two form factors: a handheld version resembling a smartphone and a pistol-grip version with a comfortable trigger. Users can change from one form to the other with ease, adapting to applications and user preferences.

WIRELESS CHARGING CRADLE – SINGLE AND 3-SLOT

The Joya Touch A6 device is charged using the industry's first wireless charging technology that eliminates the need for cleaning the contacts on the device and cradles. It radically reduces support costs and increases its life span.

The multi-bay cradle and single cradles support both handheld and pistol-grip models of the device, ensuring the right configuration for every use or application.

BOOST AND FAST CHARGING

The Joya Touch A6 device requires only 2 hours to fully charge the battery and the Boost Recharge feature ensures quick recharging. Six charging profiles are available to let the user decide which profile better suits their needs.

VOICE COMMUNICATOR

The Joya Touch A6 device can also be used as a phone using the Voice over Internet Protocol (VoIP), leveraging your Wi-Fi network.



FEATURES

- Multi-purpose device: handheld or pistol-grip
- Field upgradeable to Android 7.1 Nougat
- Chemical resistant plastics / enclosure designed to withstand daily cleaning with harsh disinfectant solutions
- Wireless charging eliminates all contacts on the device and cradle
- Supports both Boost and Fast charging modes
- VoIP phone capabilities over Wi-Fi
- Presentation mode allows automatic scanning
- Datalogic SoftSpot™ technology for innovative triggering through the touch display
- 3-Axis Accelerometer auto-rotates the screen orientation
- 4.3 inch capacitive multi-touch FWVGA display with Gorilla® Glass 3
- Vibration alert for notifications
- Beacon support via BLE for geolocation
- Advanced 2D imaging technology
- Datalogic's patented 'Green Spot' technology for visual good-read feedback
- EASEOFCARE Service Plans offer a wide range of service options to protect your investment, ensuring maximum productivity and ROI

INDUSTRY-APPLICATIONS

- Patient Bedside Care
 - Electronic Medical Records (EMR)
 - Bedside Medication Administration
 - Specimen Collection
- Laboratory
 - Specimen Tracking
 - Diagnosis and Tests
 - Blood Bag Traceability
 - Transfusion Tracking
 - Breast Milk Tracking
- Pharmacy
 - Medication Dispensing Process
 - Replenishment and Inventory Management
- Admittance, Accounting and Billing
 - In-patient
 - Out-patient
 - Emergency

TECHNICAL SPECIFICATIONS

WIRELESS COMMUNICATIONS

LOCAL AREA NETWORK (WLAN)	IEEE 802.11 a/b/g/n; Wi-Fi Security Standards: WEP, WPA/WPA2 PSK, 802.1x EAP: PEAP/MSCHAPV2, PEAP/GTC, TLS, TTLS/PAP, TTLS/MSCHAP, TTLS/MSCHAPV2, TTLS/GTC, PWD
PERSONAL AREA NETWORK (WPAN)	Bluetooth® wireless technology v4.0 - Dual Mode (Classic Bluetooth wireless technology and BLE available)
NFC COMMUNICATION	NFC communication between device and cradle

DECODING CAPABILITY

1D / LINEAR CODES	Auto discriminates all standard 1D codes including GS1 DataBar™ linear codes.
2D CODES	Aztec Code, Data Matrix, MaxiCode, PDF417, MicroPDF417, Micro QR Code, QR Code
POSTAL CODES	Australian Post, Japanese Post, KIX Code, Royal Mail, USPS Intelligent Mail, USPS PLANET, USPS POSTNET
DIGITAL WATERMARKS	Supports Digimarc® Barcode

ELECTRICAL

BATTERY	Replaceable battery pack with rechargeable Li-Ion batteries; 3.7 V; 3,000 mAh (12 Watt-hours)
WIRELESS CHARGING	Two charging options: Fast charging or Standard charging

ENVIRONMENTAL

CHEMICAL RESISTANCE	Isopropyl Alcohol, Hydrogen Peroxide, Clorox® Bleach; applicable for both the device and cradles
DROP RESISTANCE	Withstands repeated drops from 1.2 m / 4.0 ft onto plywood and 1.5 m / 5.0 ft onto plywood with the rubber boot accessory
TEMPERATURE	Operating: -10 to 50 °C / 14 to 122 °F

INTERFACES

INTERFACES	USB 2.0 Client (with standard Micro-USB connector) SDXC card slot (not user accessible)
------------	-----------------------------------------------------------------------------------------

USER INTERFACES

ACCELEROMETER	3-Axis accelerometer
SOFTSPOT TECHNOLOGY	Virtual trigger/scan key
TRIGGER	Pistol-grip models only
VIBRATION	Software programmable

PHYSICAL CHARACTERISTICS

COLORS (STANDARD)	Enclosures: White Battery Covers: Light Green
DISPLAY	4.3 inch full touch TFT-LCD color display; FWVGA: 854 x 480 pixels; 16M colors, LED backlight
TOUCH SCREEN	Capacitive, multi-touch, Gorilla® Glass 3
PHYSICAL KEYS	Handheld: Home/scan fully programmable key Pistol-Grip: Home/scan fully programmable key, Scan Trigger key
LIGHTING	Software programmable, lights at the bottom of the battery cover
DIMENSIONS	Handheld: 14.5 x 7.7 x 3.4 cm / 5.7 x 3.0 x 1.3 in Pistol-Grip: 14.5 x 7.7 x 11.6 cm / 5.7 x 3.0 x 4.5 in
WEIGHT (WITH BATTERY)	Handheld: 275.0 g / 9.7 oz Pistol-Grip: 305.0 g / 10.7 oz

READING PERFORMANCE

DEPTH OF FIELD	4.3 to 35.0 cm / 1.7 to 13.8 in, depending on bar code density
MINIMUM RESOLUTION	Linear codes at 4 mils; 2D codes at 5 mils
READING INDICATORS	Loudspeaker (Polyphonic); Datalogic's patented 'Green Spot' technology for visual good-read feedback

SAFETY & REGULATORY

AGENCY APPROVALS	The product meets necessary safety and regulatory approvals for its intended use.
ENVIRONMENTAL COMPLIANCE	Complies to EU RoHS

SOFTWARE

CONFIGURATION AND MAINTENANCE DEVELOPMENT	Datalogic X Platform Configuration Utility (DXU) Java and Xamarin SDK available
-------------------------------------------	---------------------------------------------------------------------------------

SYSTEM

MEMORY	System RAM: 2 GB; System Flash: 16 GB Flash Disk SD Card: Factory installed option
CPU	Qualcomm Snapdragon Quadcore 1 GHz
OPERATING SYSTEM	Google Android 6.0 Marshmallow (field upgradeable to Android 7.1 Nougat)

WARRANTY

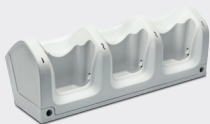
WARRANTY	1-Year Factory Warranty
----------	-------------------------



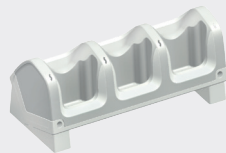
Caution: Laser Radiation - do not stare into beam

ACCESSORIES

Cradles and Holders



• 91ACC0043 3-Slot Cradle-Wall Mount



• 91ACC0069 3-Slot Cradle-General Purpose



• 91ACC0072 Single Slot Cradle Locking



• 91ACC0073 Single Slot Cradle Charge only

Miscellaneous



• 91ACC0079 Rubber Boot



• 91ACC0080 Holster



• 91ACC0036 Lanyard